

# SPEC SHEET + MEASUREMENTS

**SPORT-TEK**

## Sport-Tek® Phenom Full-Zip Hoodie. ST840

### Product photo

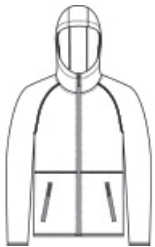


Constructed with a midweight spacer knit fabrication, this modern hoodie can be worn after training, while traveling or as a corporate layer.

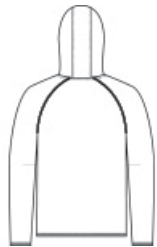
- 8.8-ounce, 56/44 cotton/polyester spacer knit
- 3-panel hood
- Reverse coil center front zipper
- Reverse coil zippered pockets
- Corded black zipper pull with reflective detail
- Contrast stretch binding on sleeves and hem

**Care Instructions** Machine Wash Cold With Like Colors. Do Not Bleach. Tumble Dry Low. Remove Promptly. Cool Iron, If Needed.

### Sketches



front



back

# SPEC SHEET + MEASUREMENTS



Sport-Tek® Phenom Full-Zip Hoodie. ST840

## PRODUCT MEASUREMENTS

	XS	S	M	L	XL	2XL	3XL	4XL
Body Length at Back	27	28	29	30	31	32	32 1/2	33
Chest	20	21 1/2	23	24 1/2	26	27 1/2	29 1/2	31 1/2
Raglans and Dolmans Sleeve Length	34 1/8	34 3/4	35 3/8	36	36 5/8	37 1/4	38	38 3/4

**Body Length at Back:** Measured from high point shoulder to finished hem at back.

**Chest:** Measured across the chest one inch below armhole when laid flat.

**Raglans and Dolmans Sleeve Length:** Measure from neck edge to finished hem.

## SIZE CHARTS

	XS	S	M	L	XL	2XL	3XL	4XL
Chest	32-34	35-37	38-40	41-43	44-46	47-49	50-53	54-57

# SPEC SHEET + MEASUREMENTS



Sport-Tek® Phenom Full-Zip Hoodie. ST840

## HOW TO MEASURE

---



### CHEST

Measure under the arm and around the fullest part of the chest with arms down, keeping tape horizontal.

## COLORS

---

Please note: PMS code information is shown only when an exact match is available.



Athletic  
Heather  
PMS COOL  
GRAY 5C



Black  
PMS BLACK  
C



Ecru  
PMS 4195C



Iron Grey  
PMS 7540C



True Navy  
PMS 533C