

# Mercer+Mettle™ Women's Stretch Drop Shoulder Pullover MM3013



A polished take on a classic sweatshirt delivers year-round versatility. The features include a wide, self-fabric crew neck and a relaxed fit. The straight drop hem has side vents and a turned cuff, for a perfect drape when untucked.

### Fabric+Weight

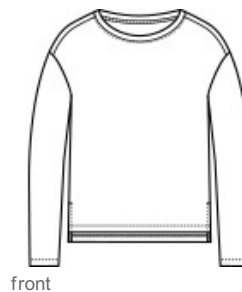
- 7.4-ounce, 53/41/6 rayon/poly/spandex French terry

### Features+Benefits

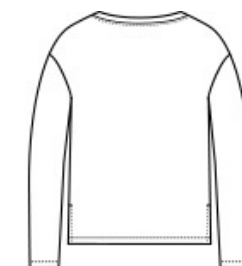
- Wide, self-fabric crew neck
- Drop shoulders
- Self-turned cuffs
- Straight drop hem
- Side vents

### CARE INSTRUCTIONS

Machine Wash Cold With Like Colors. Do Not Use Fabric Softener. Do Not Bleach. Tumble Dry Low. Remove Promptly. Cool Iron If Necessary.

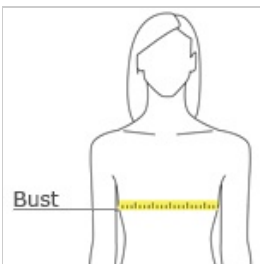


front



back

## HOW TO MEASURE



### BUST

Measure under the arm and around the fullest part of the bust with arms down, keeping tape horizontal.

## SIZE CHART

	XS	S	M	L	XL	2XL	3XL	4XL
Size	2	4/6	8/10	12/14	16/18	20/22	24/26	28/30
Bust	32-34	35-36	37-38	39-41	42-44	45-47	48-51	52-55

## COLOR INFORMATION



Anchor Grey  
PMS 426C



Deep Black  
PMS BLACK C



Night Navy  
PMS 532C